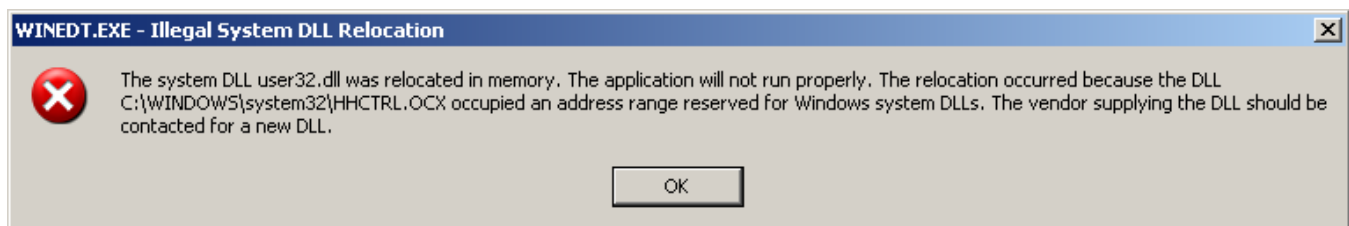


WinEDT—Error with Windows Security Update (KB925902)

April 4, 2007

Notice

OPTEC has identified an issue associated with a recent Windows Security Update released April 3, 2007. The Security Microsoft update has a known issue that causes numerous software applications including WinEDT software to fail during startup and generates an error message as shown below:



The reason for this error is a conflicting base addresses with our program and the windows updated file. Microsoft has created a hotfix to resolve this issue. To obtain this hotfix please see below.

Affected Sales Orders/Serial Numbers

The affected units include all Monochrome Signs using WinEDT.

Corrective Action Plan

To correct this problem, go to: <http://support.microsoft.com/kb/935448/>, then look for the Resolution section of the page and click on: [Download the 935448 package now.](#) Then, follow the instructions to download the file and install. After running the file, your WinEDT program should run like normal.

If you should have any question regarding this problem or solution, please call OPTEC Technical Support at 1.800.876.1668.